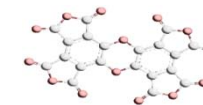
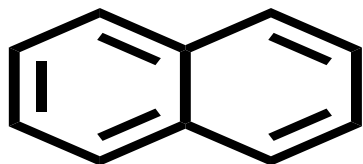




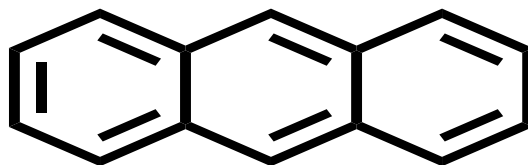
# 稠环芳烃及非苯芳香烃



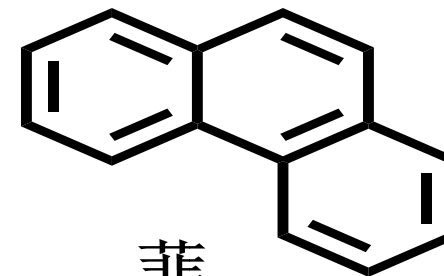
## 稠环芳烃



萘



蒽

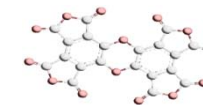


菲

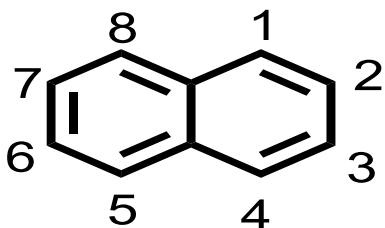




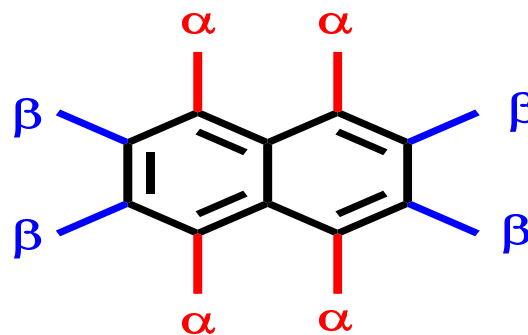
# 萘



萘的结构：平面；芳香性弱于苯。



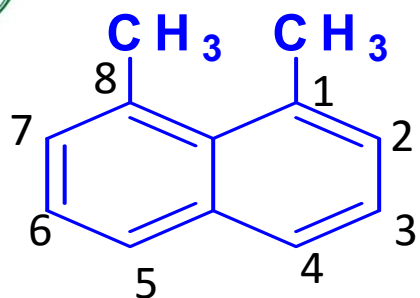
多取代



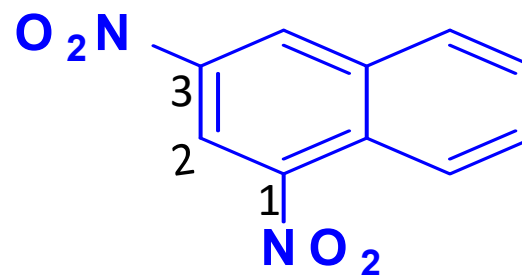
单取代

编号：必须从 $\alpha$ 位开始。

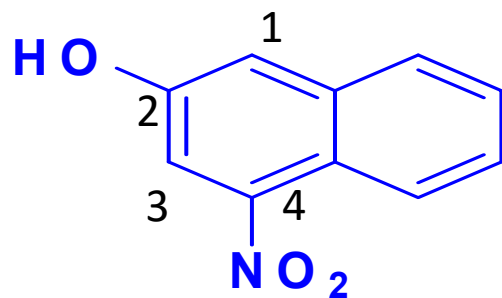




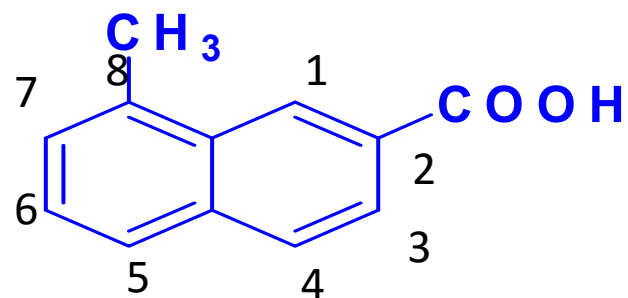
**1, 8-二甲基萘**



**1, 3-二硝基萘**



**4-硝基-2-萘酚**

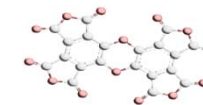


**8-甲基-2-萘甲酸**

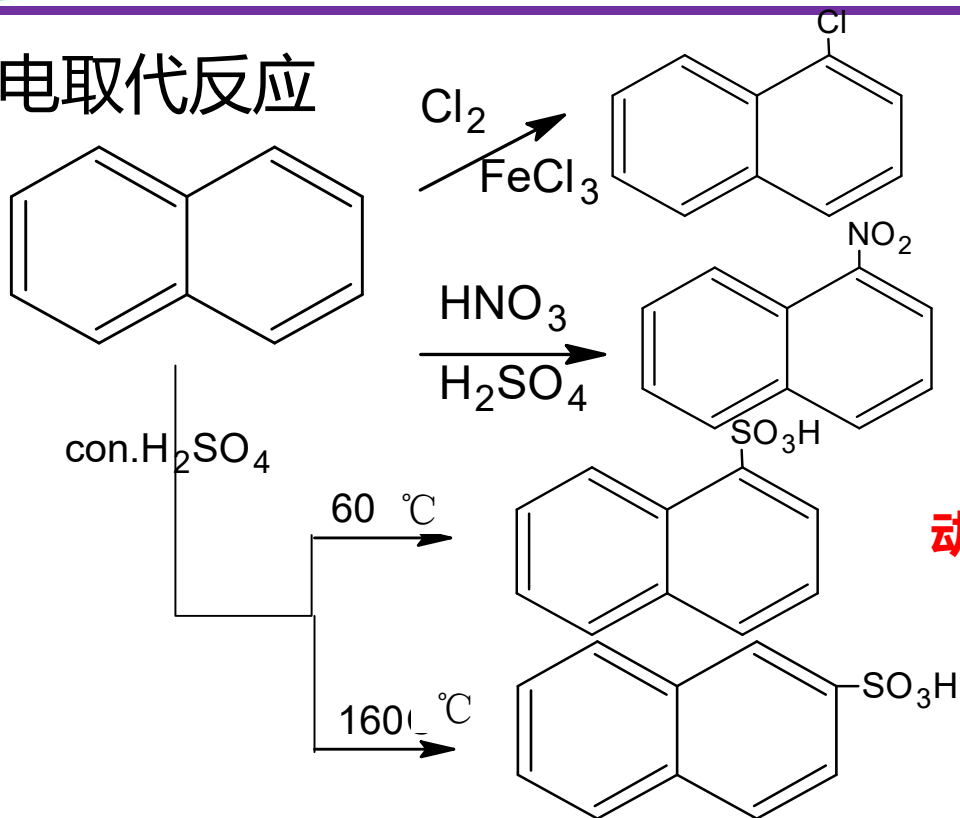




# 萘的化学性质



## 亲电取代反应



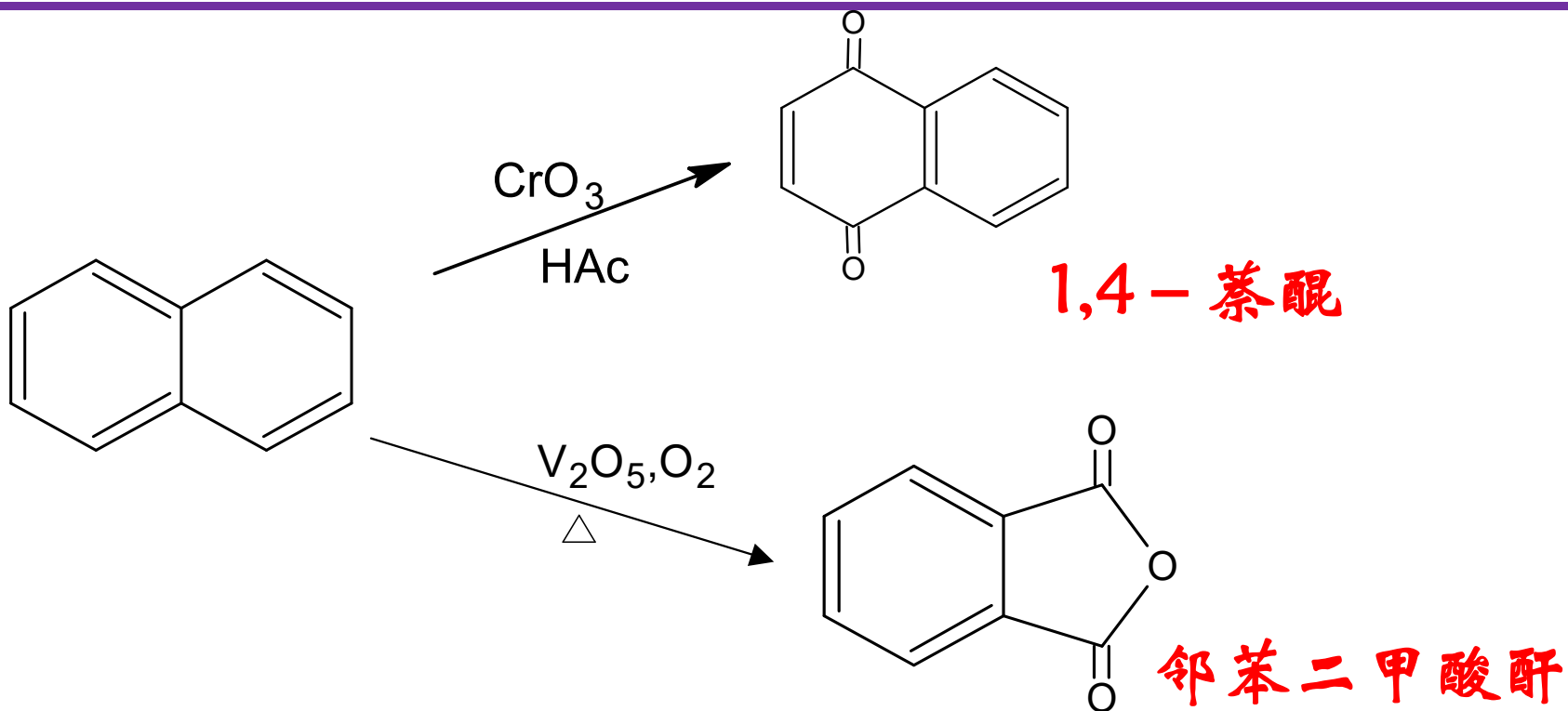
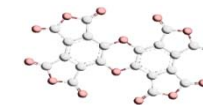
动力学控制

热力学控制



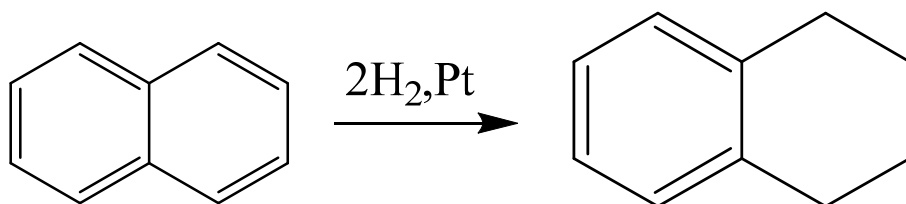
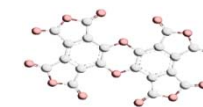


# 氧化反应

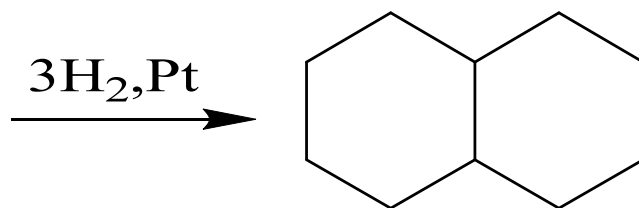




# 加成反应



1,2,3,4-四氢萘

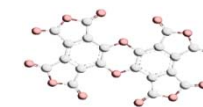


十氢萘

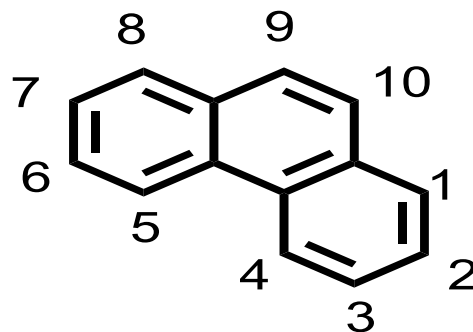
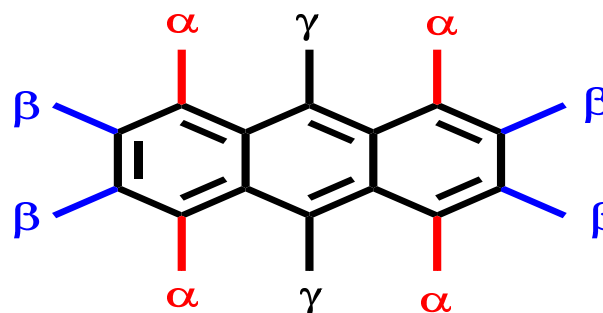
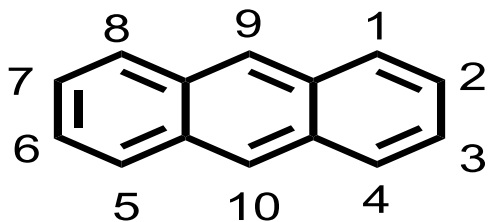




# 蔥和菲

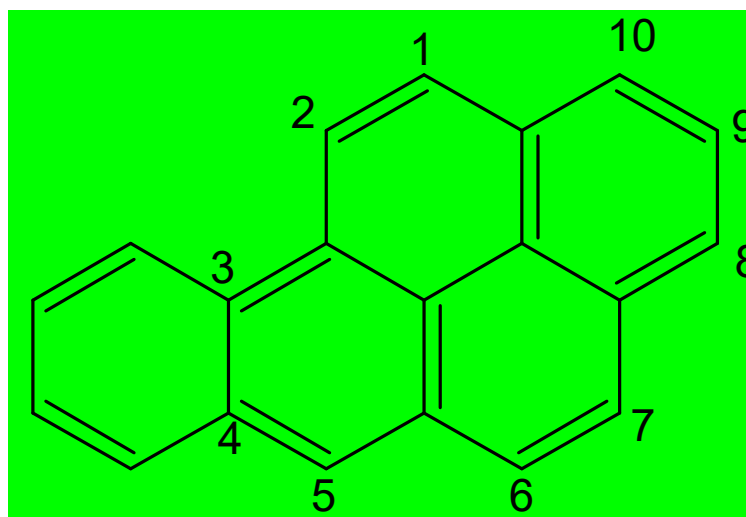
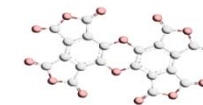


## 平面结构分子





# 其他稠环芳烃



3,4-苯并芘

